

Powering on with FlexRoad

In November 2024, FlexRoad UK carried out a trial on-site at Diemen, Netherlands, for a collaborative project between architecture and engineering consultancy Sweco and Geo-data specialist Fugro.

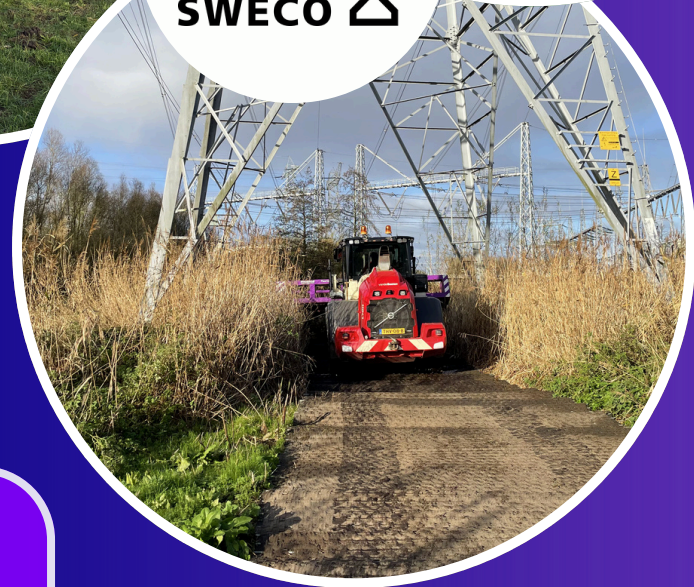
In preparation for an upgrade to a TenneT overhead power line route between Krimpen aan de IJssel and Beverwijk, a ground survey needed to be carried out to collect vital data. The soft terrain across the site meant it was difficult to conduct the survey, and whilst road plates would typically be used in these cases, FlexRoad's matting provided the perfect alternative.

FlexRoad's temporary trackway was quickly installed, enabling the team on site to carry out the ground survey on the same day. Then, the day after, Flexroad returned to remove the matting. A job well done, and all in just a few days' work!

"At our Diemen site, the ground survey location was not accessible for our equipment due to the combination of sharp bends and very low load-bearing capacity. We'd typically use road plates to combat this, but we found FlexRoad's trackways a great alternative, even on more difficult routes.

"The major advantage was that the portable, heavy-duty trackways can be quickly placed and removed, allowing us to reduce the duration of our work's impact and minimise damage to the land. This could help us manage our environmental impact and maintain good relationships with landowners in future projects. We're looking forward to working with FlexRoad again!"

David de Vlieg | Project Manager at Fugro



www.flexroad.co.uk